



Welcome to.....



More Information About **O-Core Transformer**

**Detailed Product Description**



O-Core Transformer specifications:

- \*Without fracture;
- \*With round section area;
- \*Flat rotundity, shorter height, longer diameter.

Compare to Toroidal Transformer:

- a. Saving 11.4%--30% medial winding length;
- b. With round section area, magnetic field is evener, less magnetic loss.

Compare to R-Core Transformer:

- a. with no frame astriction;
- b. better electromagnetism coupling and higher efficiency.

**Product Directory**

Power Transformer

Audio Transformer

Three Phase Transformer

Auto Transformer

Control Transformer

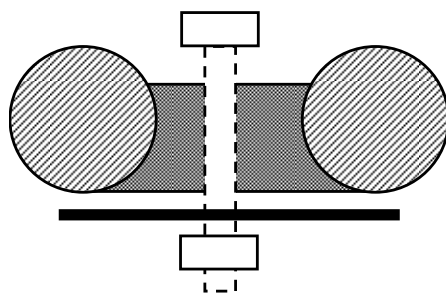
Power Adapter

Special Transformer

**Size Of Form And Installtion:**

| Model   | Capacity(VA) | Size Of Product |       | Weight(kg) | Fixed-OS(mm) | Srew(mm) |
|---------|--------------|-----------------|-------|------------|--------------|----------|
|         |              | H(mm)           | D(mm) |            |              |          |
| PO-10   | 10           | 21              | 66    | 0.4        | 6.5          | M6       |
| PO-20   | 20           | 24              | 78    | 0.55       | 6.5          | M6       |
| PO-30   | 30           | 25              | 80    | 0.7        | 6.5          | M6       |
| PO-40   | 40           | 27              | 85    | 0.85       | 6.5          | M6       |
| PO-50   | 50           | 30              | 94    | 1          | 6.5          | M6       |
| PO-80   | 80           | 32              | 100   | 1.3        | 8.5          | M8       |
| PO-100  | 100          | 35              | 106   | 1.5        | 8.5          | M8       |
| PO-120  | 120          | 36              | 113   | 1.95       | 8.5          | M8       |
| PO-150  | 150          | 38              | 117   | 2.3        | 8.5          | M8       |
| PO-200  | 200          | 42              | 125   | 3          | 8.5          | M8       |
| PO-250  | 250          | 44              | 132   | 3.2        | 8.5          | M8       |
| PO-300  | 300          | 45              | 135   | 3.6        | 8.5          | M8       |
| PO-400  | 400          | 50              | 148   | 4          | 8.5          | M8       |
| PO-500  | 500          | 57              | 158   | 4.7        | 8.5          | M8       |
| PO-600  | 600          | 59              | 162   | 5.8        | 8.5          | M8       |
| PO-800  | 800          | 60              | 174   | 7.5        | 8.5          | M8       |
| PO-1000 | 1000         | 65              | 185   | 9          | 8.5          | M8       |

**The Picture Of Installation**



**The Picture Of Form Size**

