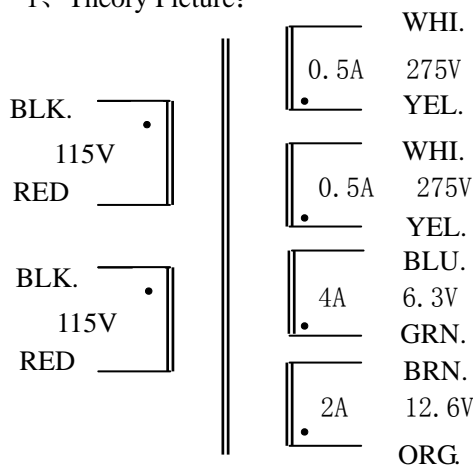


# 325VA Toroidal Power Transformer(Dual Input :2\*115V, Output:275V\*2; 6.3V; 12.6V)

## 1、Theory Picture:

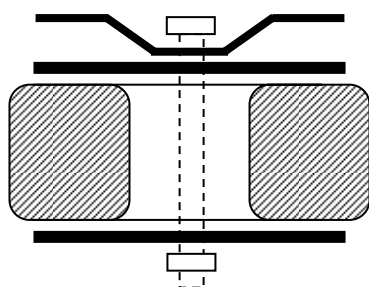


## 2、The Transformer Practicality Picture:



Product	Capacity (VA)	Dimension		Weight (kg)	Install Bore (mm)	Screw (mm)
		D(mm)	H(mm)			
Toroidal Transformer	325	128	68	3.2	φ 8.5	M8
Primary Rated Input			115V/50HZ×2			
Electric Resistance of Primary Directory Current			4.7 Ω			
Max No-loading Current			40 mA			
Insulation Capability			Primary-Secondary: 500VDC≥100M Ω			
Dielectric Strength Test			Primary-Secondary: 4000V 5mA 60s			
Temperature Rise			≤65℃			
Secondary Rated Output						
	No-loading Voltage (V±5%)		Loading Voltage (V±5%)		Rated Loading Current (A)	
Output	275V×2	6.3V 12.6V	260×2	6V 12V	0.5A	4A 2A
Derivation Line Specification						
	Color		Specification		Length (mm)	Terminals
Input	BLK.-RED	BLK.-RED	UL-1672	18#	310	5mmTin Imbrued
Output	WHI.-YEL.	WHI.-YEL.	UL-1015	22#16#20#	310	5mmTin Imbrued
	BLU.-GRN.	BRN.-ORN.				

Toroidal Power Transformer Install Sketch Map:



Toroidal Power Transformer Dimension Picture:

